

# LCDC Member Profiles 2016-2017



## Members of the LCDC

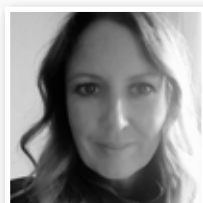
*Back row (L-R):* Tony Lambert, Ellen O’Dea, Adeline O’Brien, Brid Walsh, Adaku Ezeudo, Maire O’Brien, Oisín Geoghegan, Ed Hearne, Jeff Murphy, Laurence Ward, Una Cafferey, Cllr Brian McDonagh, Anthony Brennan

*Front row (L-R):* Alice Davis, Cllr Tony Murphy, Breffni O’Rourke, Dr. Pat O’Connor, Siobhan Lawlor, Tom Hahey



### **ALICE DAVIS**

Alice Davis is an active Community Development worker and has been involved in Balbriggan Meals on Wheels for more than 10 years. Working as a trainer with Lir Anti Racism Training & Education programme, she is registered with the Teaching Council of Ireland. She is a Board member of Balbriggan Meals on Wheels and Balbriggan Enterprise Development Group and the Community Council. Alice has spent a number of years working in development projects in Africa and has worked on South Inner City Development Association, Dublin as a community worker.



### **BRID WALSH**

Brid Walsh is currently the Coordinator of the North Dublin Regional Drug & Alcohol Task Force, having previously coordinated the Blanchardstown Local Drug & Alcohol Task Force for 5 years. Brid has a particular interest in the social care field and has decades of experience of working with marginalised groups in the Fingal area in previous roles including as a Mediator, Rehabilitation Worker and Project Worker. Brid has various 3rd level qualifications in counselling and rehabilitation and in previous years completed a M.Sc. in Social Science in Trinity College.



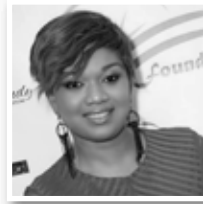
### **CLLR. TONY MURPHY**

Tony Murphy is a craftsman goldsmith and first time councillor in Fingal County Council representing the Balbriggan Ward. He has been in business in Balbriggan for more than 30 years and during that time has been involved in commercial organisations, community initiatives and sport. Relevant roles and interests: Former President and current executive member of Balbriggan Chamber of Commerce; Chair Balbriggan Creative and Cultural Quarter; Director Balbriggan Enterprise Development Group Ltd; Member of O’ Dwyer’s GAA and Glebe North FC.



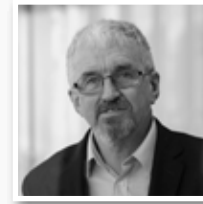
### **ED HEARNE**

Ed Hearne joined Fingal County Council from professional services firm EY (Ernst & Young), where he was a Senior Manager and led the firm's Economics Advisory team. Ed has a wide range of experience in the public and private sectors with expertise in strategy and public policy formulation, economic analysis and investment appraisal. Ed holds undergraduate and postgraduate degrees in Economics from University College Dublin and Trinity College respectively. Ed previously worked in public expenditure management, strategy development and economic policy analysis in the Departments of Finance and Public Expenditure & reform.



### **ADAKU EZEUDO**

Adaku Ezeudo is the Founder of i-Smile International, a Migrant's Women Network to promote social inclusion and intercultural understanding and collaboration among women in Dublin 15. She is a social entrepreneur, an intercultural consultant and an advocate for social justice. Her primary degree is in Accounting, she holds a University Certificate in Women's Studies with UCD and a Master's degree in Development Studies with Kimmage Development Studies Centre. She sits on the board of Co-operative Housing Ireland. Adaku is passionate about inspiring and empowering others to live their best self.



### **ANTHONY BRENNAN**

Anthony Brennan is Chairperson of Woodland Park Residents Association and board member of Rush Community Council. Anthony has always liked to be involved with community groups, working to be part of the Community and working with the Local Authority. He is on the Fingal Public Participation Network and a member of the LCDC. Anthony says the more the community group's work together, the more we get for each other.



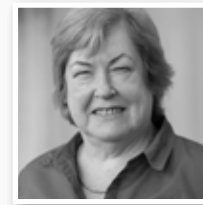
### **JEFF MURPHY**

Jeff Murphy began his career as a psychiatric nurse. As a member of his union and Chairman for 3 years he attended and presented at a number of delegate conferences. Jeff was Health & Safety rep and helped set up a Critical Incident Stress debriefing service for HSE. He became interested in media and community development. Following retirement in 2012 he became a volunteer for Phoenix FM. Jeff is committed to community broadcasting, regularly co presenting and producing the D15 Today programme and outside broadcasts. Jeff is on the Board of Phoenix FM and Board member of The Community Radio forum of Ireland.



### **CLLR NATALIE TREACY**

Natalie Treacy is an elected Sinn Féin Councillor for the Castleknock area. She attended Blakestown Community School and attained a diploma in Supervisory Management from NCI. She is a Representative on the Safer Blanchardstown Policing Forum and serves on the Board of Management at Mountview & Fortlawn Community Campus, and works full time in Sinn Féin's constituency office in Corduff. She was appointed to the LCDC and is looks forward to representing all groups in her area. Natalie is particularly interested in working to resolve the housing crisis in Dublin 15.



### **MAIRE O'BRIEN**

Maire O'Brien has a M.Sc. in Environmental Science. Maire has been nominated to represent Environmental issues on the LCDC. She is from Portmarnock and is involved with the Portmarnock Community Association and Beach Committee and An Taisce Coastcare Group. She is a lecturer with the Open University and was formerly in Environmental Control and Public Health. Maire has a keen interest in most things environmental, especially water, both fresh and salt water.



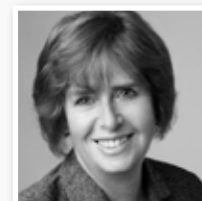
**OISÍN GEOGHEGAN**

Oisín Geoghegan took up the position of Head of Enterprise in Fingal County Council in April 2014, having served 14 years as Chief Executive at the (now dissolved) Fingal County Enterprise Board. A Master of Business Studies graduate of University College Dublin, Oisín previously held positions of Export Sales and Marketing Manager for an Irish manufacturing company and subsequently Business Manager (Ireland) of a Scandinavian manufacturer of industrial equipment for the food processing sector.



**DR. PAT O'CONNOR**

Pat O'Connor is Head of School of Humanities at the Institute of Technology Blanchardstown (ITB). Pat has been involved in education for 30 years and has extensive experience in teaching in Further and Higher education. Pat recently completed a doctorate in education at the University of Manchester and holds degrees from Trinity College Dublin and Dublin City University. Pat's research interests extend to accounting and higher education and he has had wide ranging involvement in programme design and evaluation. Pat's community engagement includes Chair of the Board of Management of St Patrick's Junior National School, Corduff and coach with Hartstown Huntstown Football Club.



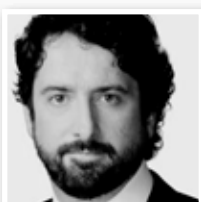
**SIOBHAN LAWLOR**

Siobhán Lawlor is the Divisional Manager for the Department of Social Protection. Her primary responsibility is the delivery of supports and services to 22,000 jobseekers in the Dublin North Division through six offices with over 300 staff reporting to her. She has over 25 years of experience and operational practice in the design and delivery of welfare policies and services, with knowledge and experience of child and family policy, social insurance and welfare legislation, payment and financial services, procurement and contracting and customer service. She studied in the Institute of Public Administration and is currently studying for a Master of Science in Innovation Management in the Public Service with Letterkenny Institute of Technology & University of Ulster.



**TONY LAMBERT**

Tony Lambert is Chief Executive Officer and Company Secretary of Fingal Dublin Chamber of Commerce (2000 – present) and Director of Chambers Ireland (2006 – present). He is also currently Director and Chairman of Fingal Tourism Limited and a member of the Institute of Directors; Dublin Airport Stakeholders Forum, Ireland Gateway to Europe, Dublin 15 Steering Group, Transports Users Policy Council, Chambers Ireland, Local Government Policy Council, Chambers Ireland; Public Affairs Forum, and the Fingal Local Community Development Committee.



**CLLR BRIAN McDONAGH**

Brian McDonagh is a Labour Councillor on Fingal County Council, first elected in 2014. Brian started work as a lifeguard and swimming teacher and then worked in factories and farms as a labourer, before moving into a sales career in the media and IT industry. He is a past pupil of Portmarnock Community School and has recently been appointed to the board of management of Portmarnock and Malahide Community Schools. Brian lives in Balgriffin and has a keen interest in planning and environmental issues as well as the arts.

# LCDC New Member Profiles 2017



## ADELINE O'BRIEN

Graduated from Trinity College Dublin with a BSc. Management. She worked in Business Development & Marketing in the private and not for profit sector. Previous roles include Development Director (Cork Opera House) to Director of the Fundraising Institute of Ireland and CEO of an Education & Training facility for at risk young people and their families in Dublin 10. Adeline was a founding Director of the Cherry Orchard Regeneration Board, a member of the Cherry Orchard Development Council, and a founding member of the Dublin 10 Restorative Practice steering group. Having commenced an MSc. in Work & Organisational Psychology / Behaviour (DCU) in 2012 Adeline worked as Consultant in the not for profit sector for registered charities and social enterprises. Adeline also provided support in terms of crisis management, operational quality audits and evaluations and established Aster Family Support. Adeline was appointed CEO of Blanchardstown Area Partnership in January 2017.



## ELLEN O'DEA

Ellen O'Dea took up the position of Head of Service for Health and Wellbeing in the HSE Community Health Organisation Dublin North City and County in November 2016. Since 2002 she has worked in management roles within the HSE and her previous role was as General Manager for Primary Care and Disability Services in Dublin South Central Area. She has a particular interest in community participation in health and in previous roles set up community participation and engagement structures within the HSE. Ellen has a BSc (Hons) in Occupational Therapy, Diploma in Leadership and Quality in Healthcare and an MSc in Health Service Management.



## UNA CAFFREY

Una is the coordinator of Fingal Children and Young Peoples Services Committee (FCYPSC). FCYPSC works to bring together a diverse group of agencies in Fingal to engage in joint planning and co-ordination of services for children and young people. Una brings to NDRDTF a wealth of experience of working in the community and voluntary sector having worked for Focus Ireland, Barnardos, Fingal County Childcare Committee to name a few. In her previous role Una coordinated the delivery of child protection training to early years professionals in Fingal. Una holds a Bachelor of Arts degree from Dublin Institute of Technology and a post grad in child protection from Trinity College Dublin.



## CHRIS O'MALLEY

Chief Executive Officer of Fingal Leader Partnership. Previously (2015-2016) Pro Vice Chancellor, Business & Development, University of Worcester, strengthening the University's relations with employers to make it a more powerful catalyst for the development of private sector economy in Worcestershire. (2013-2015) Strategic Management Consultant, working with the Irish Human Rights Commission, Equality Authority, the Disability Federation of Ireland, the Dublin Airport Stakeholders Forum and Ballymun Partnership. (2007-2013) Pro Vice Chancellor, Regional & International Development, University of Wales, Newport, responsible for line management of the International, European, Marketing, PR, and Fund raising Departments and also Centre for Community and Lifelong Learning. (2002-2007) Chair of Ballymun Partnership and founder manager of NOrDubCo. (1994-2005) Director of Strategic Development, Dublin City University.



## LAURENCE WARD

Laurence Ward is a dry stock farmer from Oldtown, North County Dublin and County Chairman of the Irish Farmers Association. He was until recently on the board of Fingal Leader Partnership. His passions are GAA and his job as a farmer.

# LCDC Retired December 2016



## DES O'SULLIVAN

Desmond O'Sullivan is the Project Manager of Jigsaw Dublin 15, a project of Headstrong, the National Centre for Youth Mental Health. He has experience in the Youth & Community sector and the Corporate sector and has a professional Youth & Community work qualification from NUI Maynooth. He was Programme Manager with Kildare Youth Services for seven years, which included managing Kildare Comhairle na nOg. He has worked in I.T. Management with AOL, Compaq and Hewlett Packard and conducted Community Arts programmes in Dublin's inner city.



## MARY McKENNA

Mary McKenna is Chief Executive Officer of Fingal LEADER Partnership. She has provided project management and consultancy services in Central & Eastern Europe on World Bank and European Union projects in the areas of Active Labour Market Measures; Vocational Education and Training (VET) policy development and Small Medium Enterprise (SME) initiatives and programmes. Mary has a B.A. (Hons) Graduate of the National University of Ireland and is a Fellowship member of Association of Accounting Technicians U.K. She also holds an Occupational Guidance and Counselling qualification from Maynooth University and a Certificate in World Class Manufacturing from UCG.



## PADRAIC McMAHON

Padraic McMahon runs and owns Fieldstown Farm located in North County Dublin. This farm has been in the family since the 1700's. It has three enterprises; cattle, sheep and tillage and specialises in grass fed lamb and free range turkeys. He is passionate about farming and protection of the environment. He has had extensive involvement in farming and local Organisations; Padraic is former Chairperson of Dublin IFA, Former Chairperson of Fingal Farmers Group and; former member of Fingal Development Board. He sits on Flavours of Fingal Committee. He is a former Board Member of Dublin Leader Partnership.



## TERRY McCABE

Terry McCabe is CEO of Blanchardstown Area Partnership and has worked in the company for 18 years. She has held management positions in the Community and Voluntary sector for 20 years. She has worked in the community sector for 23 years and is committed to community-led local development and to working closely with the local community to access services to meet their needs. She has responsibility for a number of key Government funded programmes including the Social Inclusion Community Activation Programme and oversees organisation with a staff of 160+. She holds an Honours Master's Degree in Management in the Non-Profit sector (DCU).



## PETER FORAN

Peter Foran, Senior Manager with TUSLA Child and Family Services which was established on 1st January 2014 and is now the dedicated State agency responsible for improving wellbeing and outcomes for children. It represents the most comprehensive reform of child protection, early intervention and family support services ever undertaken in Ireland. Peter previously worked in the Health Services Executive in Primary Care and Addiction Services. Peter enjoys reading, hiking and most outdoor sports.