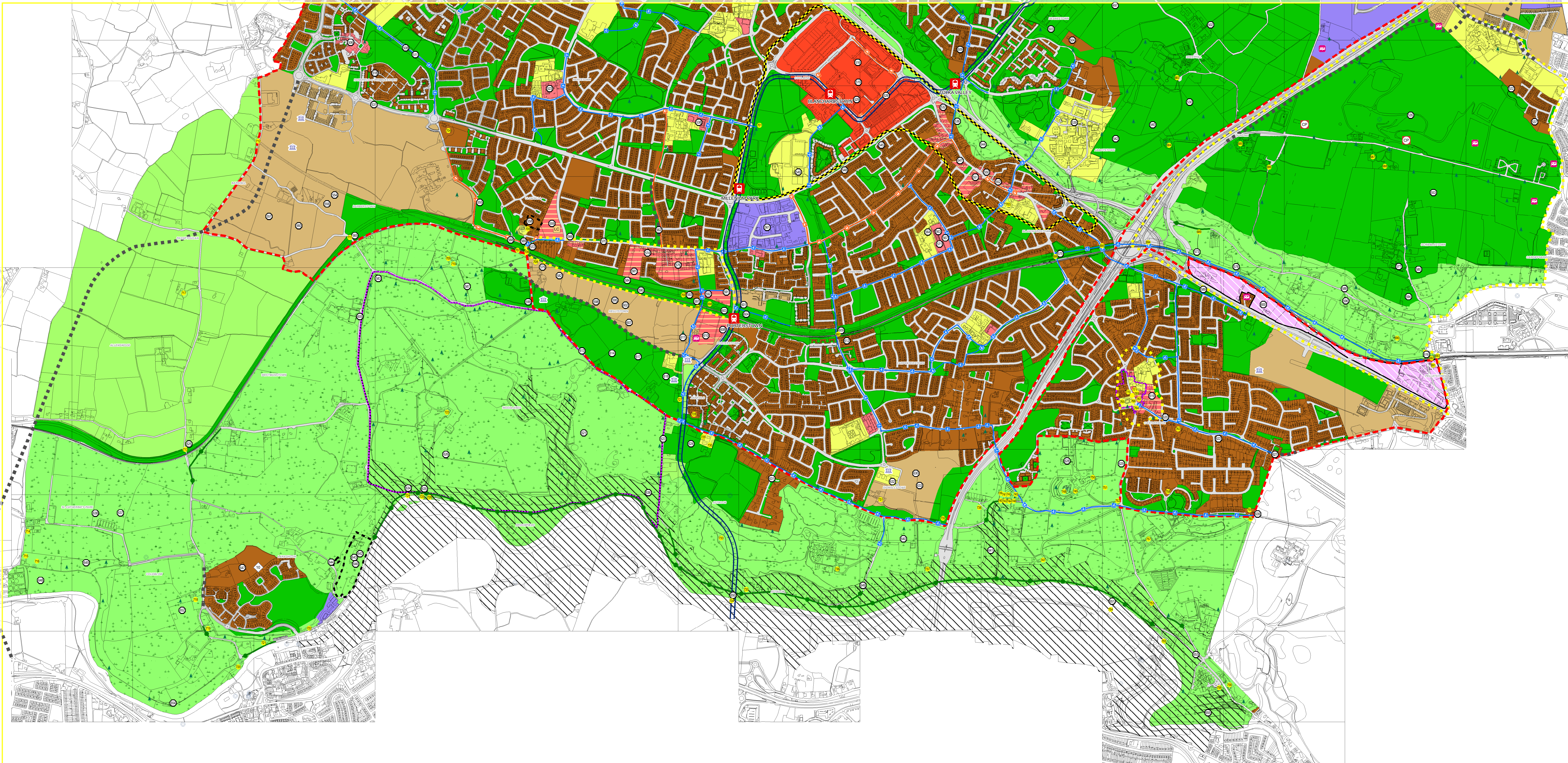


SEE SHEET 12 BLANCHARDSTOWN NORTH

SEE SHEET 12 BLANCHARDSTOWN NORTH



Zoning Objectives

- Objective CI Provide for and protect (civic, religious, community, education, health care and social infrastructure)
- Objective GB Protect and provide for a Greenbelt
- Objective GE Provide opportunities for general enterprise and employment
- Objective HA Protect and enhance high amenity areas
- Objective HT Provide for office, research and development and high technology/high technology/manufacturing type employment in a high quality built and landscaped environment
- Objective LC Protect, provide for and/or improve local centre facilities
- Objective MC Protect, provide for and/or improve major town centre facilities
- Objective OS Preserve and provide for open space and recreational amenities
- Objective RA Provide for new residential communities in accordance with approved local area plans and subject to the provision of the necessary social and physical infrastructure
- Objective RS Provide for residential development and protect and improve residential amenity
- Objective TC Protect and enhance the special physical and social character of town and district centres and provide and/or improve urban facilities

Specific Objectives

- Liffey Valley SAOD
- Subject to Local Area Plan
- Architectural Conservation Area
- Development Boundary
- Indicative Cycle/Pedestrian Route
- Metro Proposal
- Quality Bus Corridor
- Road Proposal
- Preserve Views
- Site Specific Objective Boundary
- Masterplan Area
- Urban Centre Strategy/Study Area
- Car Park
- Provide for residential development at a density per hectare as shown
- Provide for a Local Centre
- Indicative Metro Stop
- Proposed School
- Protect & preserve trees, woodlands and hedgerows
- Protected Structure
- Recorded Monument
- Local Objective

Note:
For further detail please refer to the Written Statement and/or Appendices and Green Infrastructure Maps

