

Zoning Objectives

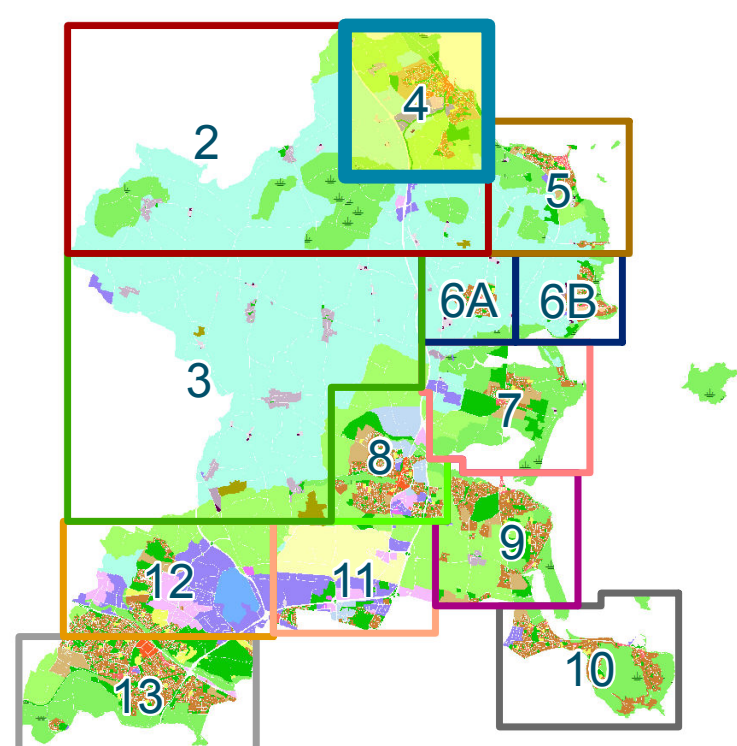
CI - Community Infrastructure	Provide for and protect civic, religious, community, education, health care and social infrastructure
GB - Greenbelt	Protect and provide for a Greenbelt
GE - General Employment	Provide opportunities for general enterprise and employment
HA - High Amenity	Protect and enhance high amenity areas
HT - High Technology	Provide for office, research and development and high technology/high technology manufacturing type employment in a high quality built and landscaped environment
LC - Local Centre	Protect, provide for and/or improve local centre facilities
MC - Major Town Centre	Protect, provide for and/or improve major town centre facilities
OS - Open Space	Preserve and provide for open space and recreational amenities
RA - Residential Area	Provide for new residential communities subject to the provision of the necessary social and physical infrastructure
RB - Rural Business	Provide for and facilitate rural-related business which has a demonstrated need for a rural location
RC - Rural Cluster	Provide for small scale infill development serving local needs while maintaining the rural nature of the cluster
RS - Residential	Provide for residential development and protect and improve residential amenity
RU - Rural	Protect and promote in a balanced way, the development of agriculture and rural-related enterprise, biodiversity, the rural landscape, and the built and cultural heritage
RV - Rural Village	Protect and promote the character of the Rural Village and promote a vibrant community in accordance with an approved Local Area Plan, and the availability of physical and community infrastructure
TC - Town and District Centre	Protect and enhance the special physical and social character of town and district centres and provide and/or improve urban facilities

Specific Objectives

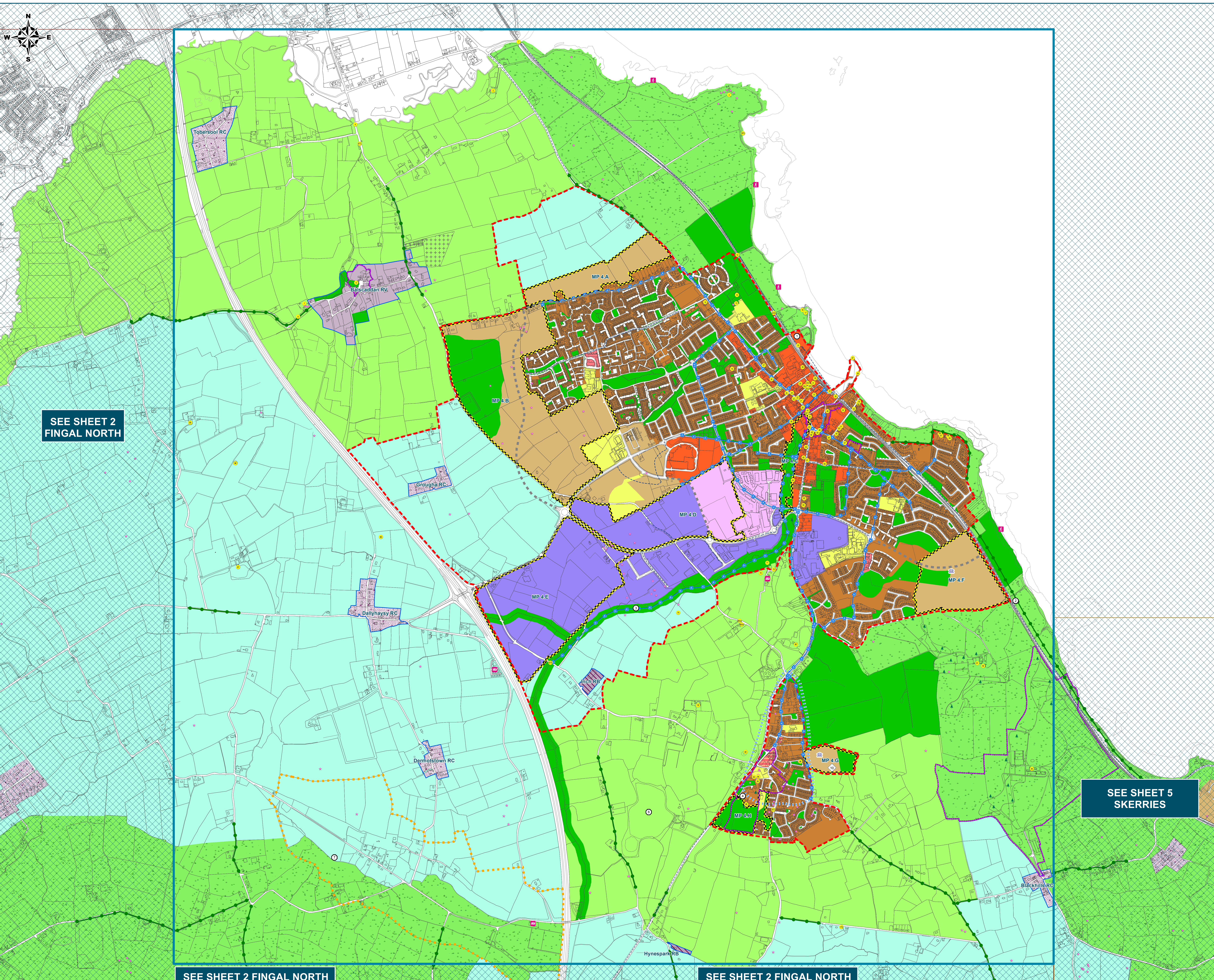
Architectural Conservation Area	
Burial Site	
Development Boundary	
Masterplan Area	
Study Area	
Zone of Archaeological Notification	
Indicative Cycle/Pedestrian Route	
Road Proposal	
Preserve Views	
Greater Dublin Area (GDA) Cycle Network	
Local Objective Points	
Protected Structures	
Recorded Monuments	
Coastal Walk	
Provide for residential development at a density per hectare as shown	
Proposed School Site	
Traveller Accommodation	
Protect & Preserve Trees, Woodlands and Hedgerows	

Note:
For further detail please refer to the **Written Statement, Written Statement Appendices and the Green Infrastructure Maps**
For further details of the Greater Dublin Area (GDA) Cycle Network please refer to Sheet 14 Green Infrastructure Map 1
To view details of Recorded Monuments and Places see www.archaeology.ie/publications-forms-legislation/record-of-monuments-and-places

Sheet Index Map



Be part of it.



SEE SHEET 2 FINGAL NORTH

SEE SHEET 5 SKERRIES

SEE SHEET 2 FINGAL NORTH

SEE SHEET 2 FINGAL NORTH