

Zoning Objectives

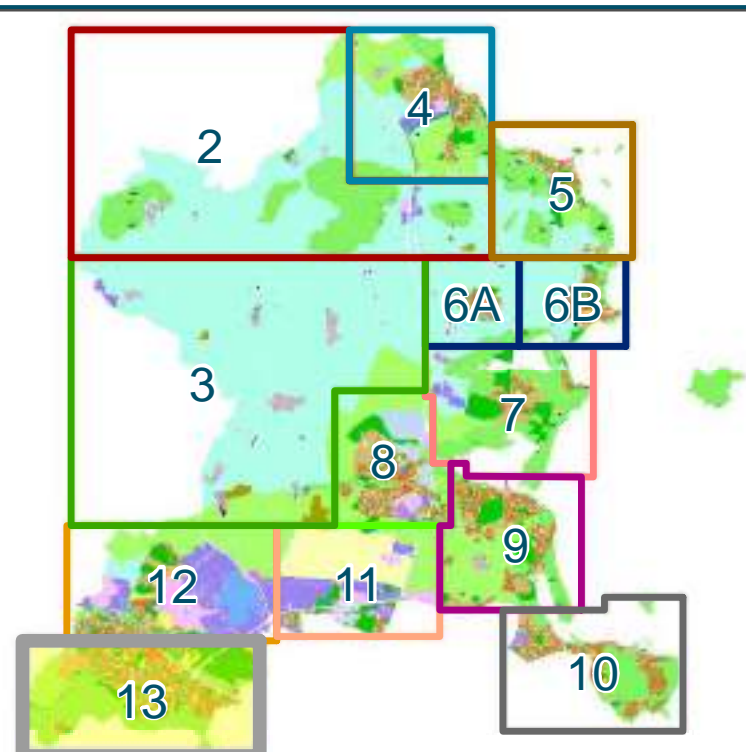
- CI - Community Infrastructure Provide for and protect civic, religious, community, education, health care and social infrastructure
- GB - Greenbelt Protect and provide for a Greenbelt
- GE - General Employment Provide opportunities for general enterprise and employment
- HA - High Amenity Protect and enhance high amenity areas
- HT - High Technology Provide for office, research and development and high technology/high technology manufacturing type employment in a high quality built and landscaped environment
- LC - Local Centre Protect, provide for and/or improve local centre facilities
- MC - Major Town Centre Protect, provide for and/or improve major town centre facilities
- OS - Open Space Preserve and provide for open space and recreational amenities
- RA - Residential Area Provide for new residential communities subject to the provision of the necessary social and physical infrastructure
- RS - Residential Provide for residential development and protect and improve residential amenity
- TC - Town and District Centre Protect and enhance the special physical and social character of town and district centres and provide and/or improve urban facilities

Specific Objectives

- County Boundary
- Architectural Conservation Area
- Development Boundary
- Subject to Local Area Plan
- Masterplan Area
- Study Area
- Liffey Valley SAO (Special Amenity Area Order)
- Strategic Development Zone - SDZ
- Site Specific Objective Boundary
- Urban Framework Plan
- Indicative Cycle/Pedestrian Route
- Light Rail Corridor
- Quality Bus Corridor
- Road Proposal
- Preserve Views
- Greater Dublin Area (GDA) Cycle Network
- Local Objective Points
- Protected Structures
- Recorded Monuments
- Provide for residential development at a density per hectare as shown
- Light Rail Stop
- Proposed School
- Traveller Accommodation
- Protect & Preserve Trees, Woodlands and Hedgerows

Note:
For further detail please refer to the Written Statement, Written Statement Appendices and the Green Infrastructure Maps
For further details of the Greater Dublin Area (GDA) Cycle Network please refer to Sheet 14 Green Infrastructure Map 1
To view details of Recorded Monuments and Places see www.archaeology.ie/publications-forms-legislation/record-of-monuments-and-places

Sheet Index Map



Be part of it.

SEE SHEET 12
BLANCHARDSTOWN NORTH

SEE SHEET 12
BLANCHARDSTOWN NORTH

